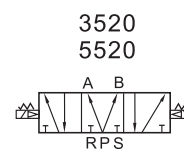
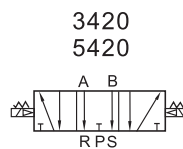
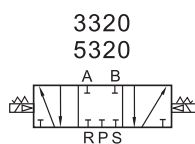
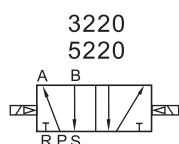
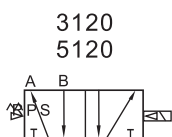


SY Series Solenoid Valve



Ordering Code

SY3

Type Code

SY3:SY3 series
SY5:SY5 series
SY7:SY7 series
SY9:SY9 series

1

Series Code

1:Single control
2:Double control
3:Double control 3Position Center Close
4:Double control 3Position Center Exhaust
5:Double control 3Position Center Pressure

20

□

Coil

L: Vertical Type
M: Horizontal Type
G: Pin Type

-

M5

Joint Size

M5: M5X0.8
01:1/8"

-

DC24V

Standard Voltage

DC24V
AC220V 50/60Hz

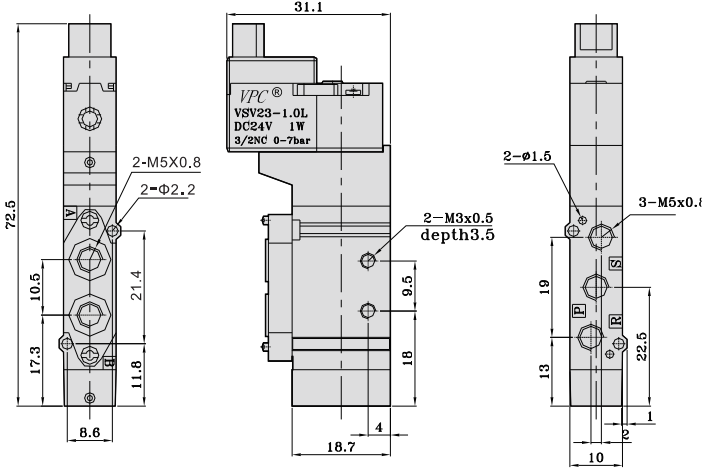
Specifications

Model	SY3120	SY3220	SY3320	SY5120	SY5220	SY5320
			SY3420			SY5420
Clean air(40µm Filtration)						
Working Medium	Clean air(40µm Filtration)					
Working Pressure	0.15~0.7Mpa	0.1~0.7Mpa	0.2~0.7Mpa	0.15~0.7Mpa	0.1~0.7Mpa	0.2~0.7Mpa
Working Temperature	-10~60°C					
Max operating frequency	10Hz	10Hz	3Hz	5Hz	5Hz	3Hz
Response time	<12ms	<12ms	<15ms	<19ms	<19ms	<32ms
Exhaust Way	Centralized exhaust					
Lubrication	Not necessary					
Installation type	Free					
Impact Resistance Vibration Resistance	150/30m/s ²					
Protective Class	IP65					
Joint Size	M5			1/8"		

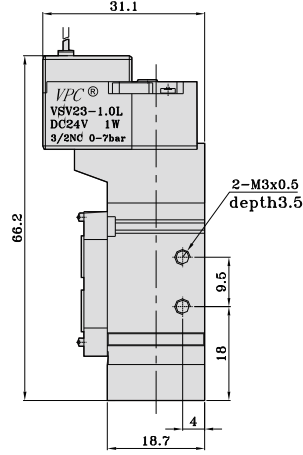
SY Series Solenoid Valve

■ Main Dimensions

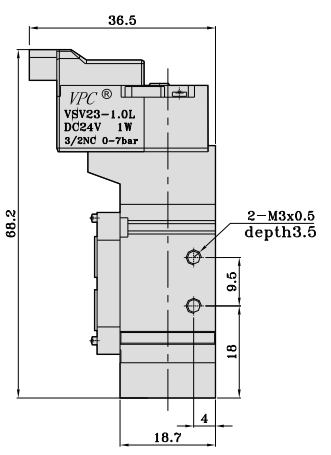
SY3120-L



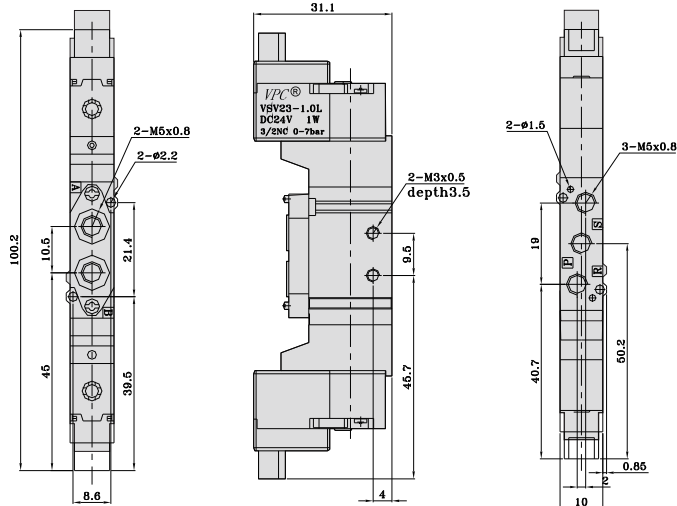
SY3120-G



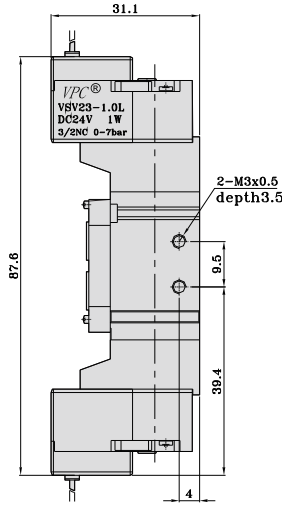
SY3120-M



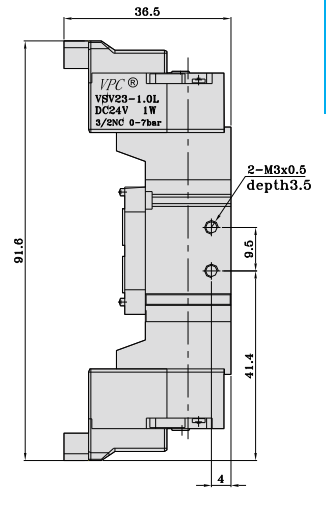
SY3220-L



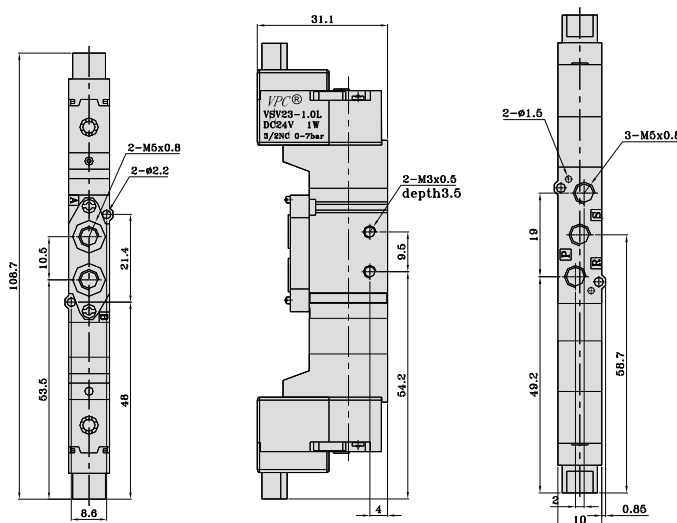
SY3220-G



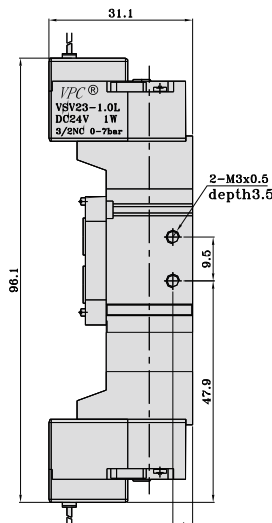
SY3220-M



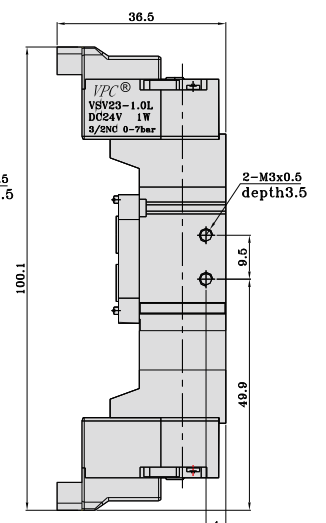
3
SY3420-L
5



3
SY3420-G
5



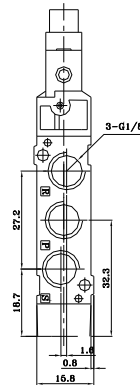
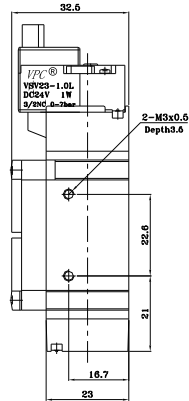
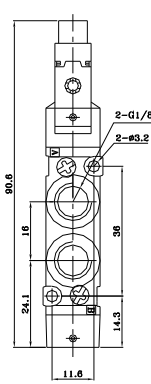
3
SY3420-M
5



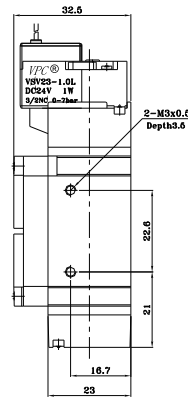
SY Series Solenoid Valve

Main Dimensions

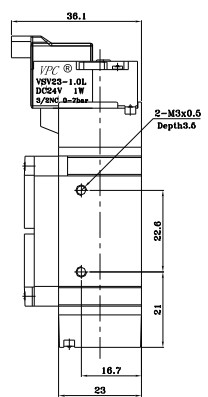
SY5120-L



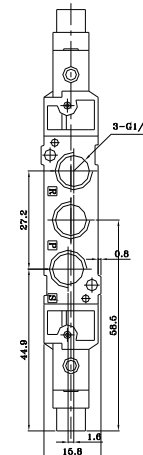
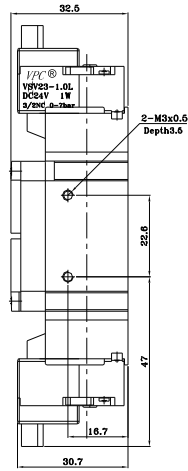
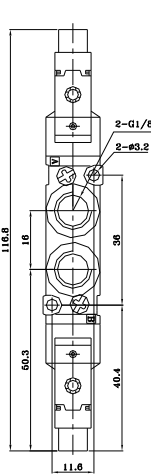
SY5120-G



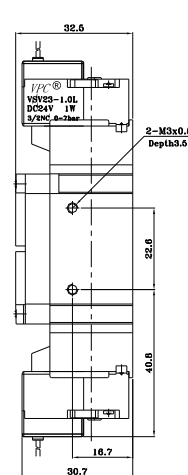
SY5120-M



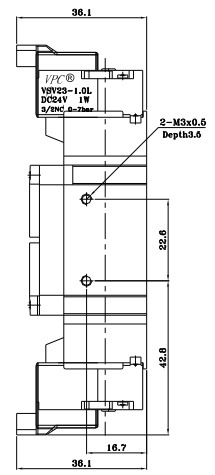
SY5220-L



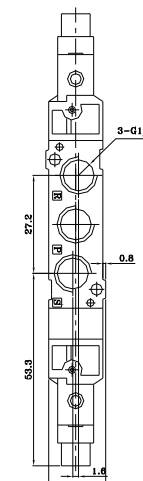
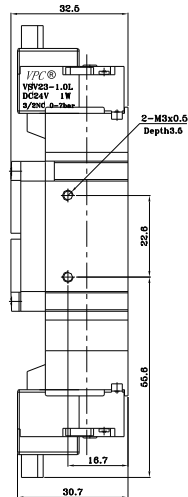
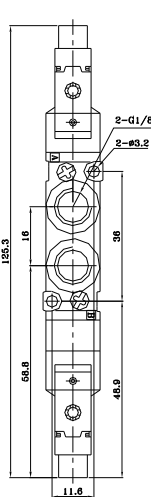
SY5220-G



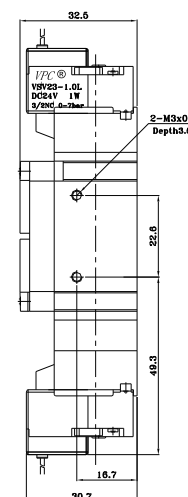
SY5220-M



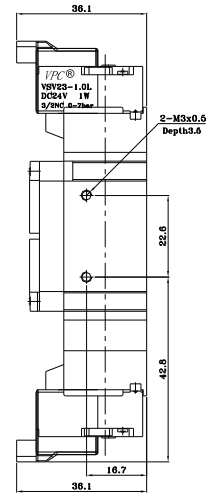
3
SY5420-L
5



3
SY5420-G
5



3
SY5420-M
5



II